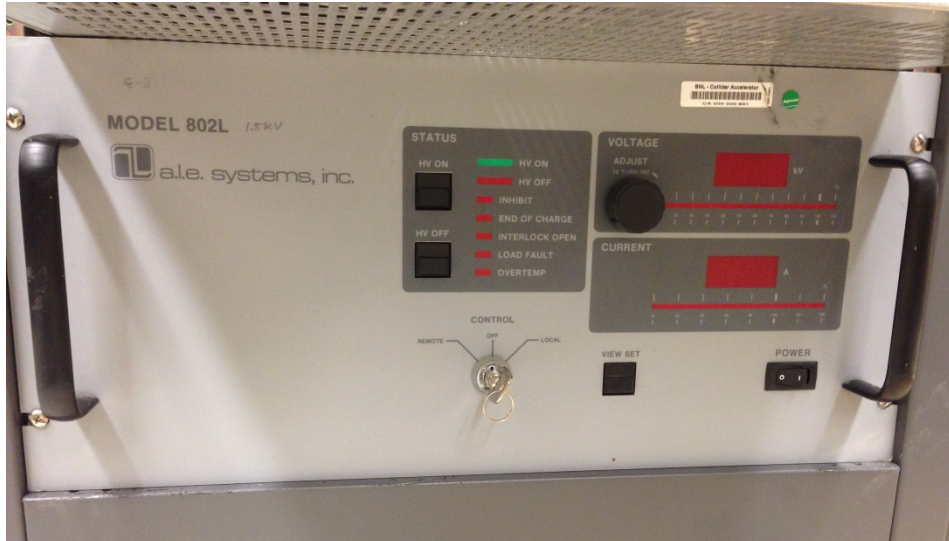


Primary charging supply

August 3, 2017

EQUIPMENT SHOULD BE SEND TO CORNELL



Primary HV POWER SUPPLY (one unit)



Two HV transformers

PULSED PRIMARY HV GENERATOR (one unit)
(Which contains capacitors, discharged to the primary windings of HV transformer, charging the Blumlein)

These parts allow independent charging of each kicker (three total)

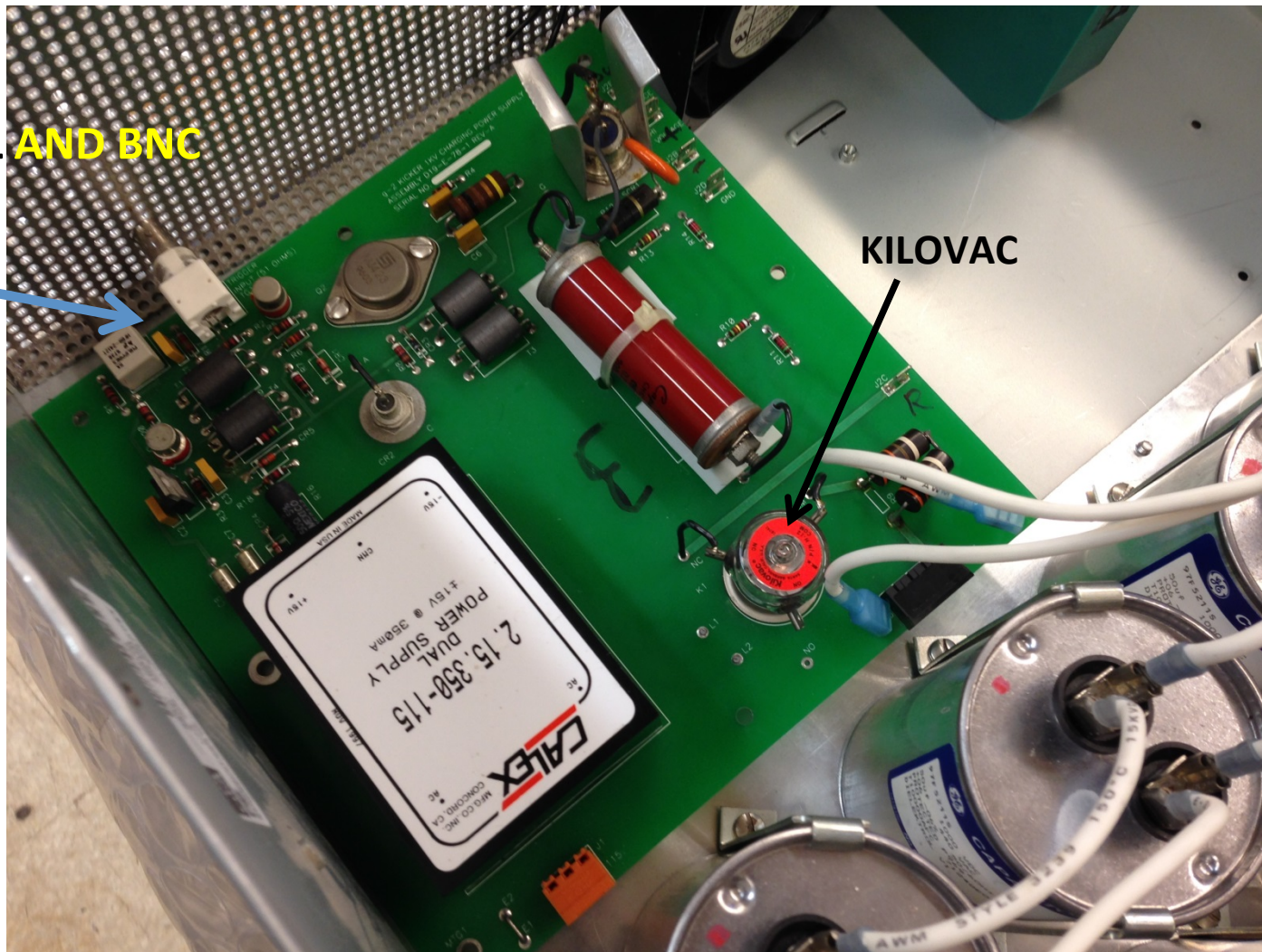


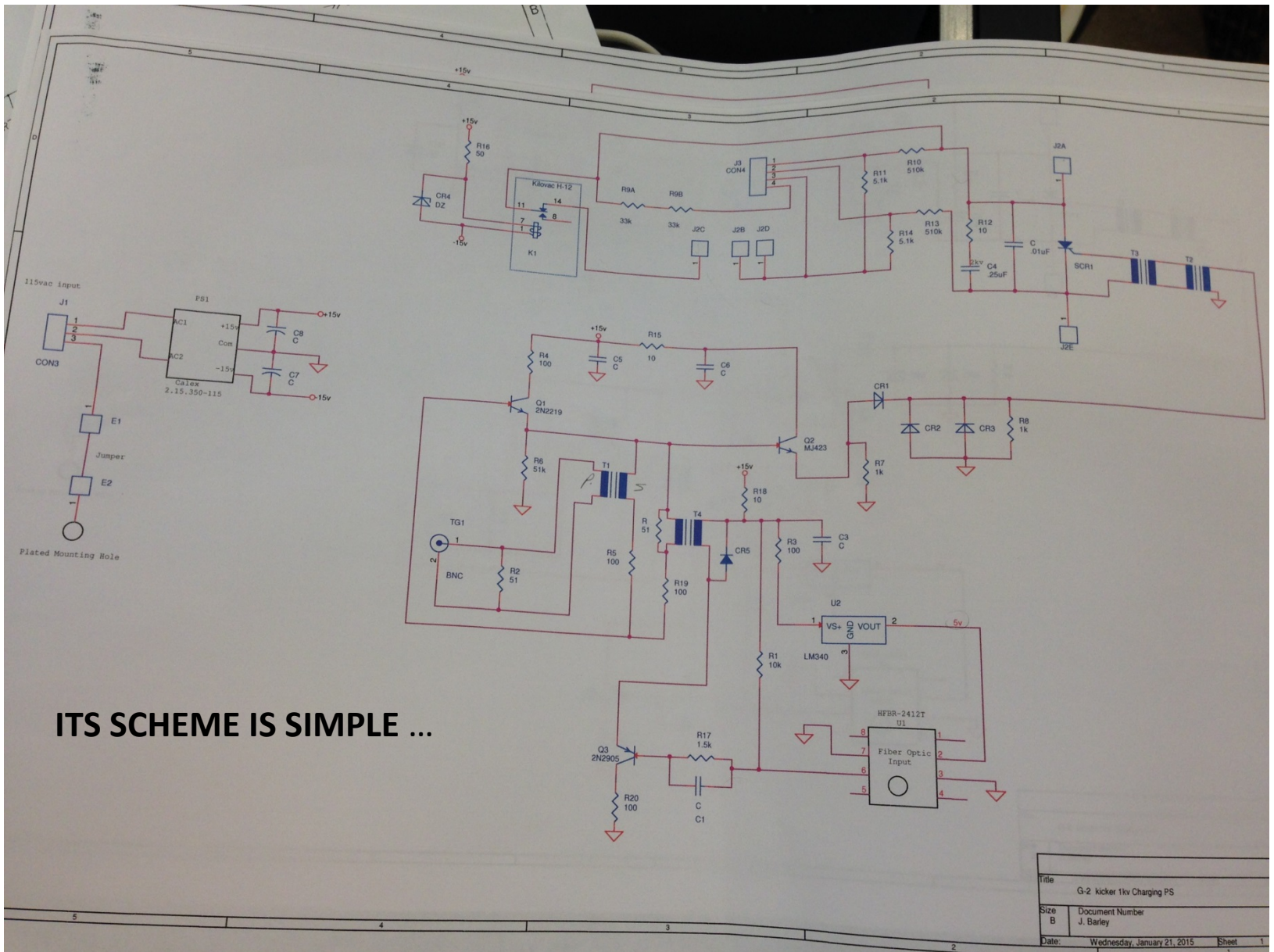
PULSED PRIMARY HV GENERATOR IS IN A PROCESS OF RE-ALLOCATION IN A SMALLER CASE. IDENTICAL TO THE ONE IN USE NOW

TRIGGERING BLOCK REMAINS THE SAME

OPTICAL AND BNC
INPUTS

KILOVAC



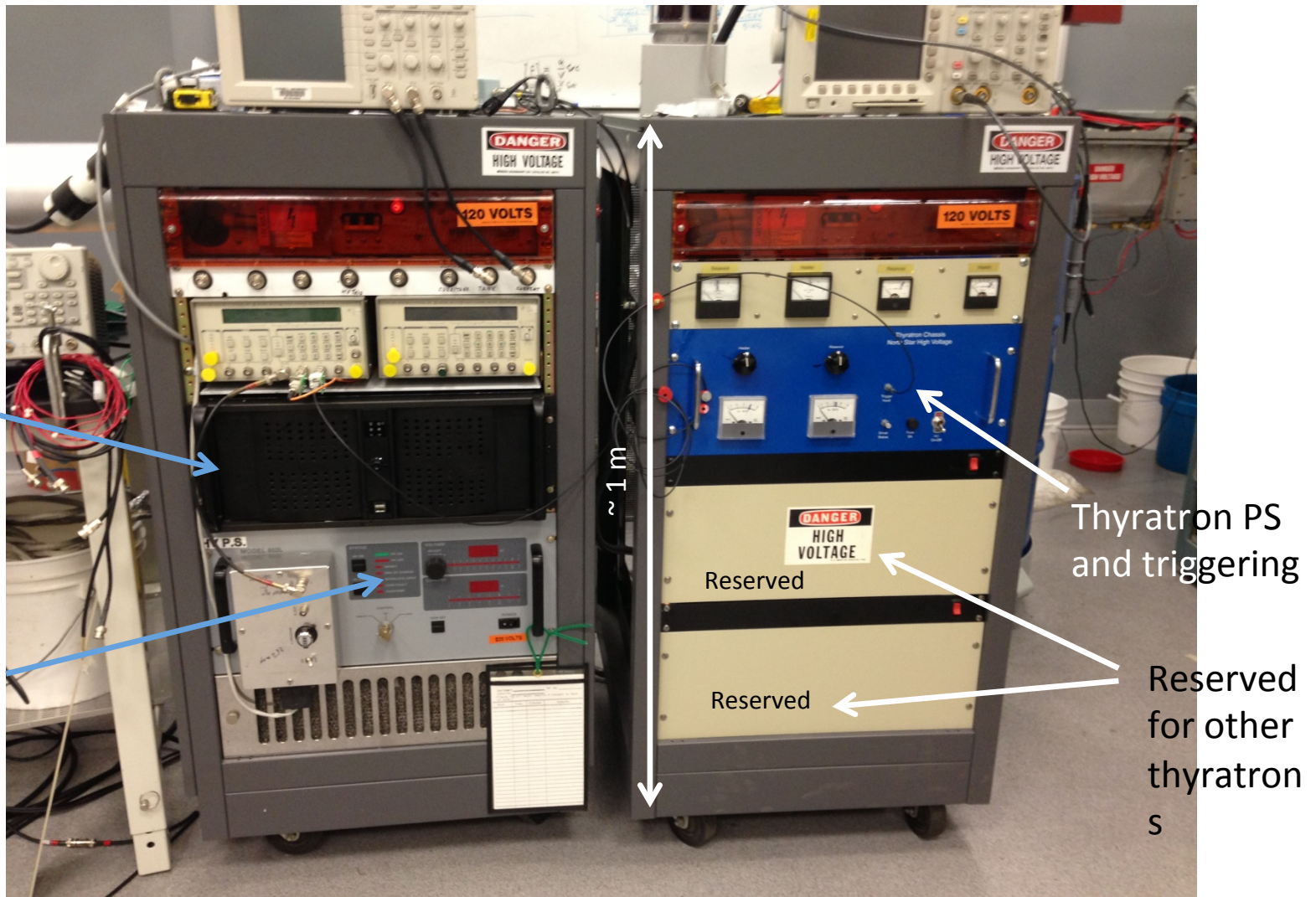


ITS SCHEME IS SIMPLE ...

Title	
G-2 Kicker 1kv Charging PS	
Size	Document Number
B	J. Barley
Date:	Wednesday, January 21, 2015
Sheet	1

Pulser for
Blumlein
charging
250J @1 kV;

Primary PS,
9kJ/sec, for
charging
capacitors in
the pulser.
Controllable
charging time
is ~ 7 ms



These two mini-towers will feed all three Blumlein HV pulsers. They have **optical triggering** through the fiber-optic cables. Second set of the PS and pulser is in plans.