



Bottle Caps & Reservoirs



Inside.....

- Specifications 2*
- Features 2*
- Ordering Information 3*
- Accessories 4*
- Reservoir Filters 4*

Chemically inert bottle caps to ensure a simple, leak-free connection to your solvent reservoir

- Chemically inert PTFE construction
- Anti-twist range available
- GL32 and GL45 thread types
- Custom designs available for OEM applications

Helicoil Series

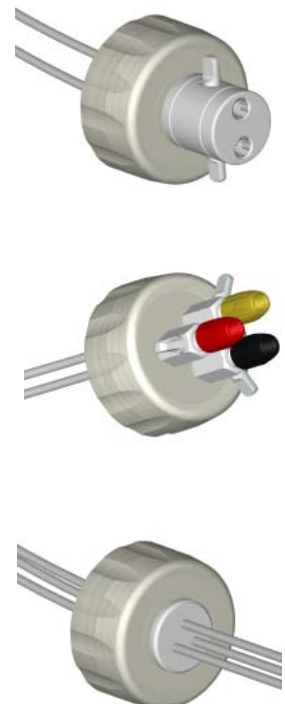
These caps provide a simple method of connection using standard 1/4"-28 UNF flat bottom ports. Each port accepts a standard 1/4"-28 UNF male fitting, making them ideal for use with our 1/4"-28 UNF Gripper fittings. The caps have an anti-twist design that means trouble-free fitting and removal of caps - the caps twist, but the tubes do not. Caps are also available with an on/off valve on each port, enabling flow lines to be opened or closed independently of each other. These bottle caps are ideal for a wide range of laboratory and instrument manufacturer applications.

Colored Cap Series

These caps use the 'Omnifit Cap' connection system for easy and versatile tubing connection. Hardwall tubing sizes between 0.5 and 4mm OD can be connected using either Viton® O-rings or PTFE cones, supplied with the cap. Using the PTFE cones results in a highly inert, all-PTFE fluid path. 2, 3 and 4 solvent lines can be handled, with or without on/off valves on each line. Colored caps are supplied with each bottle cap for easy line identification. Other colors are available separately.

Low Profile Series

Low profile bottle caps provide an elegant solution for multi-line connection to reagent bottles, where space is limited. Each cap is fitted with 1/8" OD PTFE tubing which passes straight through a PTFE body in the middle of the cap. This PTFE body moves freely within the outer shell of the cap, giving an anti-twist design that means trouble-free fitting and removal of caps - the caps twist, but the tubes do not.

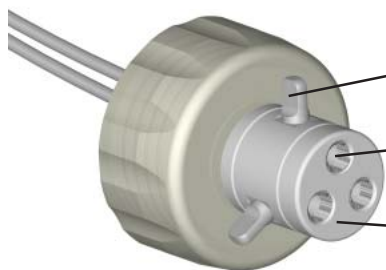


Bottle Cap Specifications

Series	Helicoil	Cap	Low-profile	
Wetted materials	Cap body:	PTFE	PTFE	Not wetted
	'O'-ring:	N/A	Viton®	N/A
	Cone:	N/A	PTFE	N/A
	Integral tubing:	PTFE	PTFE	PTFE
Connection options	Hardwall tubing:	Female port accepting 1/4"-28 UNF male fitting	<ul style="list-style-type: none"> Colored cap accepting 1/4"- 28 UNF male fitting 'O'-ring accepting 0.5 - 4mm OD tubing Cone accepting 0.5-4mm OD tubing 	1/8" OD PTFE tubing integral to cap
	Softwall tubing:	Female port will accept 1/4"-28 UNF male thread to barb adaptor	Colored cap will accept 1/4"-28 UNF male thread to barb adaptor	N/A
Pressure rating	15 psi (1 bar)	15 psi (1 bar)	15 psi (1 bar)	

Bottle Cap Features

Helicoil Series

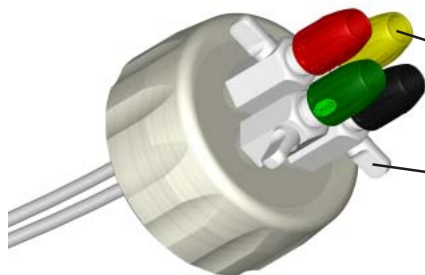


On/off valve: optional Kel-F®, on/off valves on each port, allowing individual lines to be switched on or off independently of each other

Helicoiled ports: 2 or 3 x 1/4"-28 UNF female, flat-bottom ports, with integral 316 stainless steel helicoil for secure connections

Anti-twist design: central PTFE body rotates independently of the cap, preventing solvent lines from twisting when screwing the cap on or off the bottle

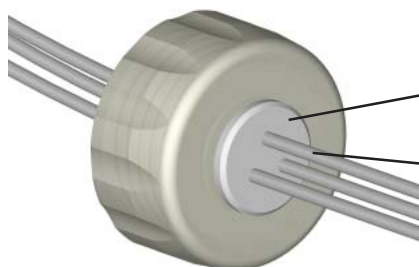
Colored Cap Series



Colored cap system: 2, 3 or 4 colored cap connections giving the option of connecting by O-ring or PTFE cone compression fitting, or using 1/4"-28 UNF male fittings.

On/off valve: optional Tefzel®, on/off valves on each port, allowing individual lines to be switched on or off independently of each other

Low-profile Series



Low profile design: integral tubing lines remove the need for bulky connections, ideal for applications where head-space is limited

Anti-twist design: central PTFE body rotates independently of the cap, preventing solvent lines from twisting when screwing the cap on or off the bottle

Ordering Information

Bottle Caps

Choose how many solvent lines you need and whether or not you want on/off valves. Then choose the Series followed by the GL32 or GL45 thread type to find the part number for ordering.

Solvent lines	Valves	Helicoil Series		Cap Series		Low-profile Series	
		GL32	GL45	GL32	GL45	GL32	GL45
2	no	3286	3284	n/a	3224	3286LP	3284LP
2	yes	3281	3280	n/a	3221	n/a	n/a
3	no	3287	3285	n/a	3223	3287LP	3285LP
3	yes	3283	3282	n/a	3220	n/a	n/a
4	no	n/a	n/a	n/a	3226	n/a	n/a
4	yes	n/a	n/a	n/a	3222	n/a	n/a

Note: A blank GL45 cap is available, specify part number 3220UN.

Reservoirs

Reagent bottles are made from borosilicate glass and protected by a safety net. The reservoirs have volumetric markings to indicate volume remaining. Choose GL32 or GL45 thread type and glass type followed by the volume required to find the part number for ordering.



Clear



Plastic coated

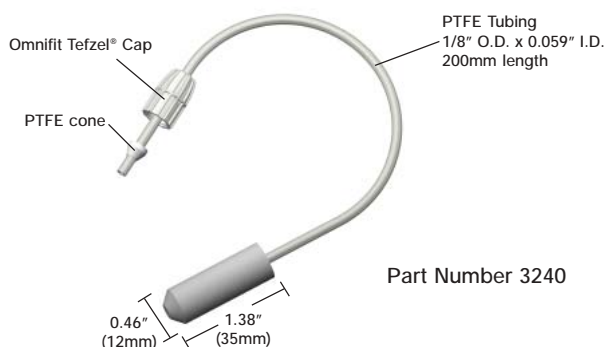
Thread type	Glass type	Volume (ml)					
		50	100	250	500	1000	2000
GL32	Clear	3400	n/a	n/a	n/a	n/a	n/a
GL45	Clear	n/a	3401	3402	3403	3404	3405
GL45	Plastic coated	n/a	3407	3408	3409	3410	3411
GL45	1bar pressure rated, clear	n/a	n/a	n/a	n/a	3406	n/a
GL45	1 bar pressure rated, plastic coated	n/a	n/a	n/a	n/a	3412	n/a

For special applications please contact factory - we offer a custom design service for OEM customers to deliver bottle caps customized to fit your instrument and application perfectly.

Reservoir filters

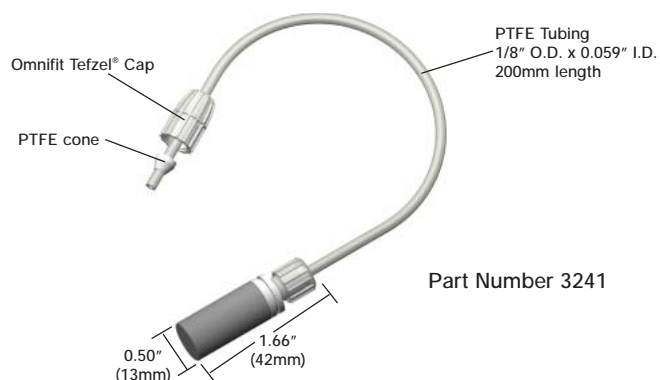
All PTFE filter/bubbler

This all PTFE filter is supplied with 1/8" OD tubing for connection directly to an Omnifit Helicoil or Colored Cap Series bottle caps in GL32 and GL45 thread types. Connect using the supplied Omnifit Tefzel® cap and PTFE cone when using Omnifit Colored Cap Series bottle caps or press-fit the tubing into the ports on the inside of Helicoil Series bottle caps.



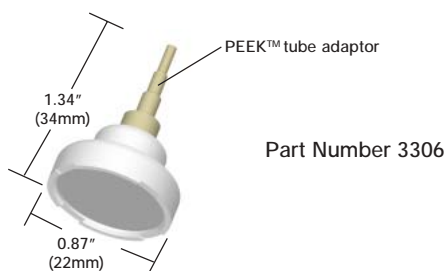
Stainless steel sinter/filter

This in-reservoir filter made of stainless steel, Tefzel® and PTFE is supplied with 1/8" OD tubing for connection directly to an Omnifit Helicoil or Colored Cap Series bottle caps in GL32 and GL45 thread types. Connect using the supplied Omnifit cap when using Omnifit Colored Cap Series bottle caps or press-fit the tubing into the ports on the inside of Helicoil Series bottle caps.



Bottom of the Bottle Filter

These bottom of the bottle filters have a PTFE body with a PEEK™ tube adaptor where hard wall tubing can be connected. They are designed for GL32 and GL45 bottle sizes. The filter material is 10µm PTFE.



Connection Accessories

For connection accessories see the Tubing, Fittings, Adaptors & Couplings, Omni-Lok™ Fitting System and Connectors spec sheets.

Trademarks:

Kel-F® is a registered trademark of the 3M Company

Omni-Lok™ is a trademark of Omnifit Ltd.

PEEK™ is a trademark of Victrex plc

Tefzel® and **Viton®** are registered trademarks of E.I. du Pont de Nemours and Company

Rev. 1104

Bio-Chem Valve / Omnifit, 2 College Park, Coldhams Lane, Cambridge, CB1 3HD UK
t: +44 (0) 1223 416642 f: +44 (0) 1223 416787 e: sales@omnifit.com w: omnifit.com

Bio-Chem Valve / Omnifit, 85 Fulton Street, Boonton, NJ 07005 USA
t: 973 263 3001 f: 973 263 2880 e: info@bio-chemvalve.com w: bio-chemvalve.com