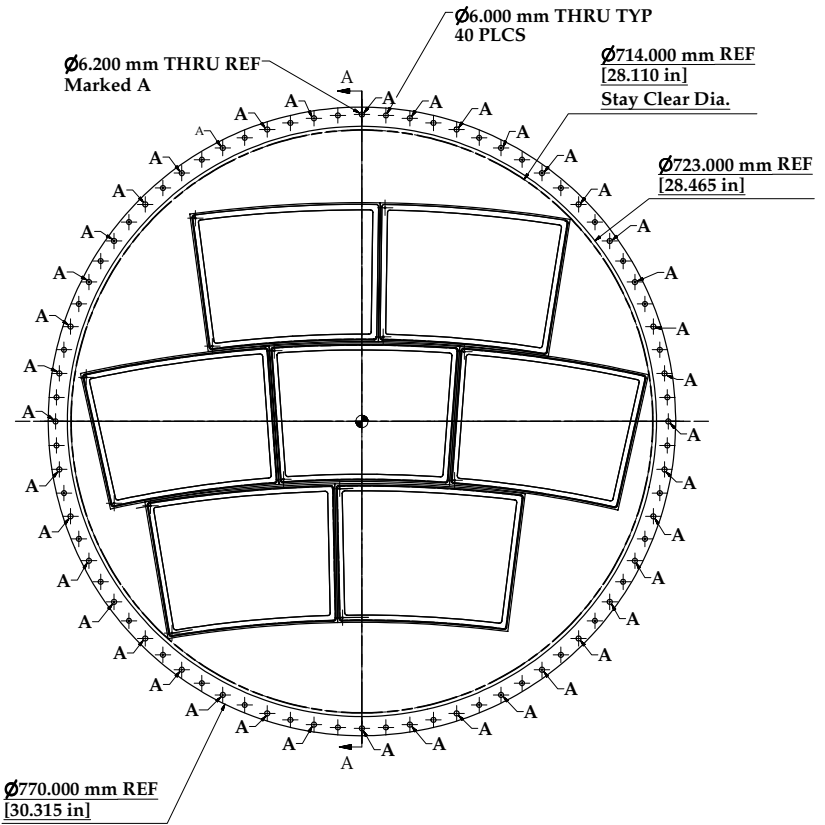
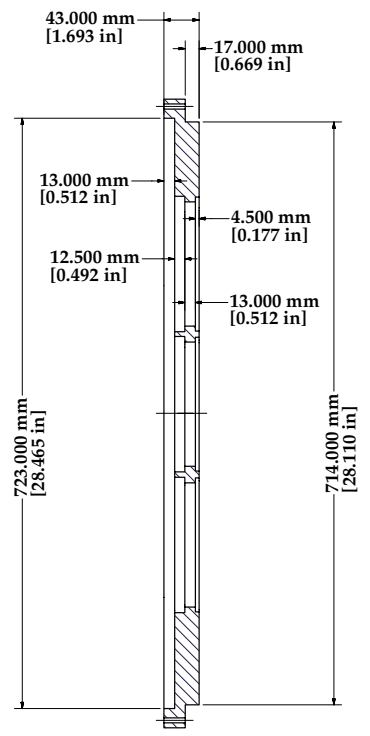


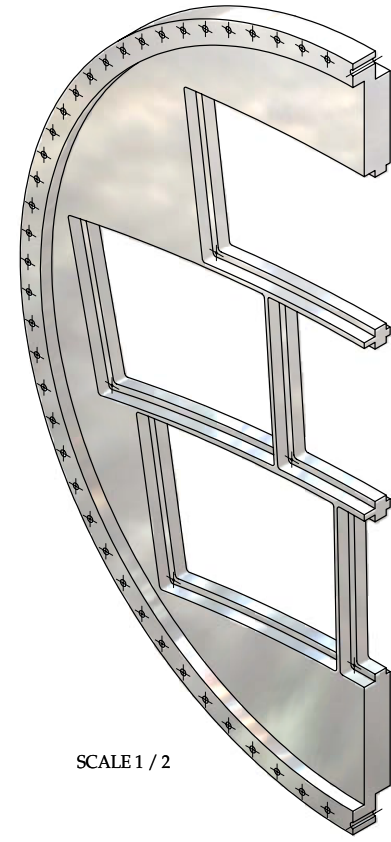
REVISIONS			
SYM.	ZONE	DESCRIPTION	DATE APP.



SCALE 1 / 3



SECTION A-A
SCALE 1 / 3



SCALE 1 / 2

- 1 End Plate
- FILE NAME: 6080-102
 SHEET NO.: 1
 DFT. SCALE: NOTED
 MATERIAL: 6061-T6 Alum
 QTY: 1
 NOTES:

FOR MACHINING LUBRICANT USE ONLY
 ALKALINE DETERGENT LUBRICANT CIMSTAR 40
 OR EQUIVALENT APPROVED BY CORNELL LEPP

TECHNICAL RESOURCE APPROVALS REQUIRED BEFORE FABRICATION			
	OK	DATE	N/A
DRAFTING (O'Connell):			
MACHINE SHOP (Kaminski):			
CHEMISTRY (Cochran):			
ELECTRONICS SHOP (Barley):			
FURNACE BRAZING (Sherwood):			
BEAM WELDING (Sears):			
WELDING OTHER (Gallagher):			
UTILITIES INTEGRATION (Gallagher):			
STOCKROOMS (Lockwood):			

ITEM	DWG. NO.	DESCRIPTION	G1	G2	G3	REMARKS	REV.
			QUANTITY				
PRINT DISTR.	6080-102	PLOT DATE: CAD FILE NAME: 6080-102 Endplate.idw					
UNLESS OTHERWISE SPECIFIED: DIMENSIONS ARE IN INCHES: TOLERANCES ON: Ø ± 0.01 XXX ± 0.05 FRACTIONS ± 1/64 ANGLES ± 0.5 ALL SURFACES ✓				CORNELL UNIVERSITY Floyd R. Newman Laboratory Ithaca, NY 14853			
CHECKED BY: Peterson APPROVED BY: Peterson		DRAWN BY MDS		DRAWN FOR Peterson		DATE 5/3/2007	
SCALE Noted		D		6080-102 SH. NO. 1 OF 6		REV.	