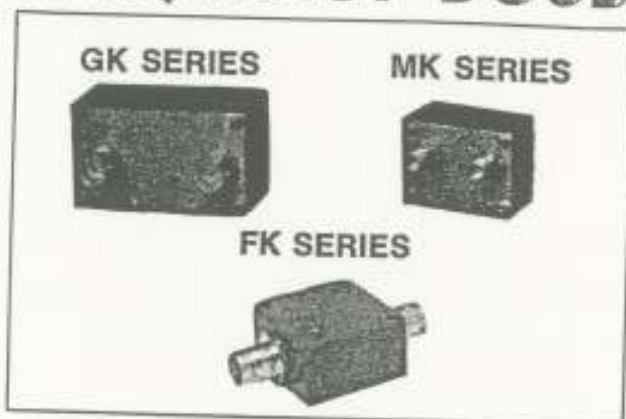


0 dBm to +20 dBm FREQUENCY DOUBLERS



MODEL	FREQUENCY	Z (Ohms)	COST
GK-2	1 MHz - 1000 MHz	50	\$32.95 (1-4)
MK-2	1 MHz - 1000 MHz	50	\$42.95 (1-4)
GK-3	50 KHz - 300 MHz	50	\$30.95 (1-4)
MK-3	50 KHz - 300 MHz	50	\$37.95 (1-4)
GK-5	10 MHz - 2000 MHz	50	\$57.95 (1-4)
MK-5	10 MHz - 2000 MHz	50	\$67.95 (1-4)
FK-5	10 MHz - 2000 MHz	50	\$59.95 (1-4)

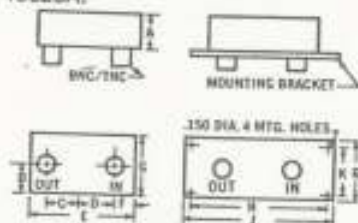
DESCRIPTION—These frequency doublers are economically priced while covering the very broad frequency range from 50 KHz to 2000 MHz. They offer a very low conversion loss, 12.5 dB, and high spurious rejection 40 dB. These doublers give exceptional unit to unit matched performance.

They operate with 50 ohm impedances at input and output ports and are not very sensitive to input power, and perform well from 0 dBm to +20 dBm input.

DIMENSIONS AND CONNECTIONS

GK Series

The GK Series packages are rugged double shielded to meet tough RFI requirements. The case is die-cast aluminum finished with a blue baked-enamel per Federal Standard 595 #25109 over phosphoric etch per MIL-C-15328A.



Mounting Bracket Available on Request: Add Suffix B to part number and \$1.50 to unit cost. Connectors: BNC standard. TNC on request (no charge).

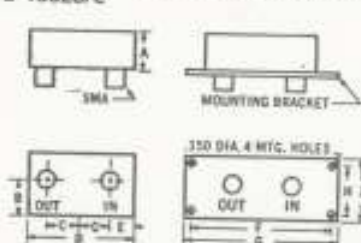
	A	B	C	D	E
IN.	1.15	.630	.750	.730	2.25
MM	29.0	16.0	19.0	18.5	57.0

	F	G	H	J	K
IN.	.385	1.40	2.95	3.25	1.10
MM	9.77	35.5	74.9	82.5	28.0

WEIGHT 74 grams 2.6 ounces

MK Series

The MK Series packages are rugged double shielded to meet tough RFI requirements. The case is die-cast aluminum finished with a blue baked-enamel per Federal Standard 595 #25109 over phosphoric etch per MIL-C-15328A.



Mounting Bracket Available on Request: Add suffix B to part number and \$1.50 to unit cost. Connectors: SMA (3mm).

	A	B	C	D	E	F	G	H	J
IN.	0.88	0.66	1.43	1.50	.312	2.19	2.50	0.84	1.15
MM	22.0	17.0	38.0	38.0	7.90	55.6	63.5	21.0	29.0

WEIGHT 34 grams 1.02 ounces

FEATURES

- Broadband:** 50 KHz to 2000 MHz
- Low Conversion Loss:** Typically less than 12.5 dB
- High Spurious Rejection:** Typically greater than 40 dB
- High Reliability:** 100% tested, one year guarantee

GK SERIES

- Connectors: BNC or TNC
- Compact: 2.25" width, 1.4" height, 1.15" depth
- Low Cost: As low as \$30.95 in small quantity

MK SERIES

- Connectors: SMA (3mm)
- Miniature: 1.5" width, 1.15" height, 0.88" depth
- Low Cost: As low as \$39.95 in small quantity

FK SERIES

- Connectors: BNC, TNC, SMA, Type N
- Low Profile: 1.25" width, 0.75" height, 1.25" depth
- Low Cost: As low as \$59.95 in small quantity

APPLICATIONS

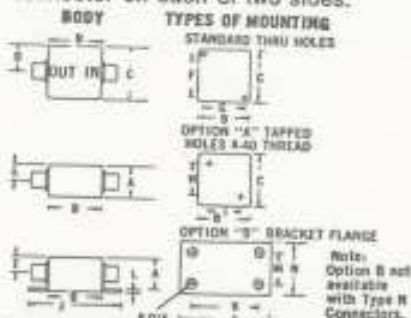
- Wideband frequency multiplier chains
- Low spurious frequency multiplier chains
- FM, PM modulation chains
- Double frequency range of signal generators

ABSOLUTE MAXIMUM RATINGS

- Input Power: 100 mW
- Operating and Storage Temperature: -55°C to +100°C
- Environmental Specifications: See Index Page

FK Series

The FK Series is housed in an extremely rugged 1 1/4" square metal case with one connector on each of two sides.



Connectors: BNC standard, TNC on request (no charge), SMA (3mm) or Type N on request (add \$5 to unit cost).

Mounting Options: Option "A" tapped holes, no cost. Option "B" mounting bracket, add \$1.50 to unit cost. Specify by adding suffix A or B to part no.

	A	B	C	D	E	F	G	H	J
IN.	0.75	1.25	.625	.375	1.00	0.80			
MM	19.1	31.8	15.9	9.50	25.4	20.4			

	I	J	K	L	M	N	P
IN.	0.60	2.188	1.488	.260	0.75	1.25	.325
MM	15.3	55.4	37.8	6.60	19.1	31.8	8.28

WEIGHT 54.5 grams 1.92 ounces

Mini-Circuits

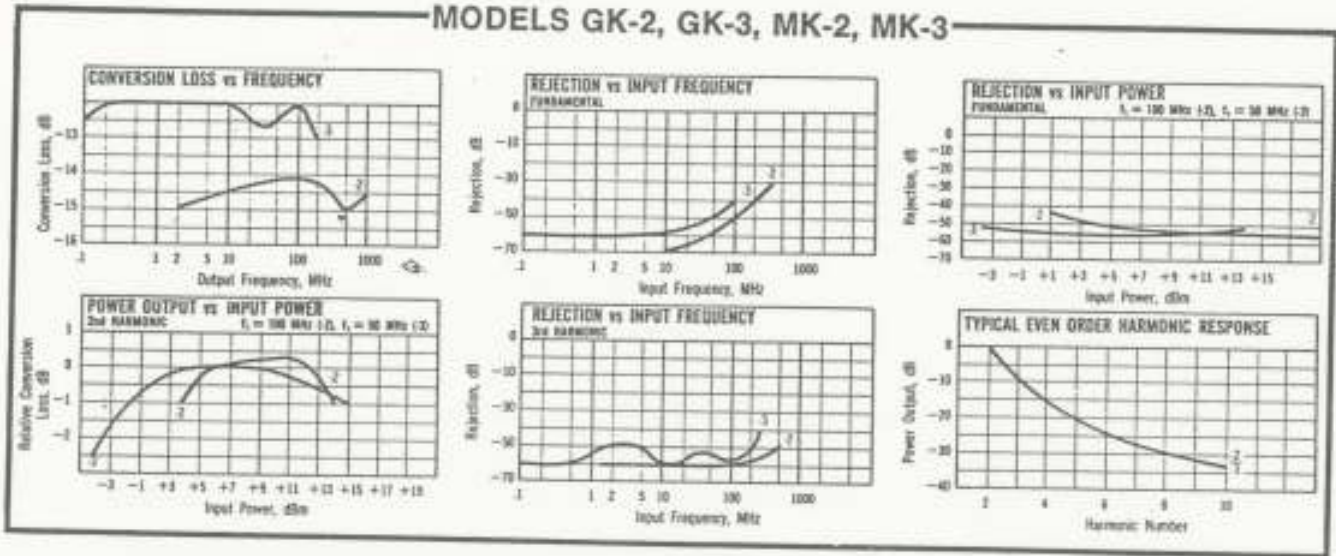
2625 E. 14th St., Brooklyn, NY 11235 (212) 769-0200/Dom. Telex 125460/Int'l. Telex 620156

SPECIFICATIONS

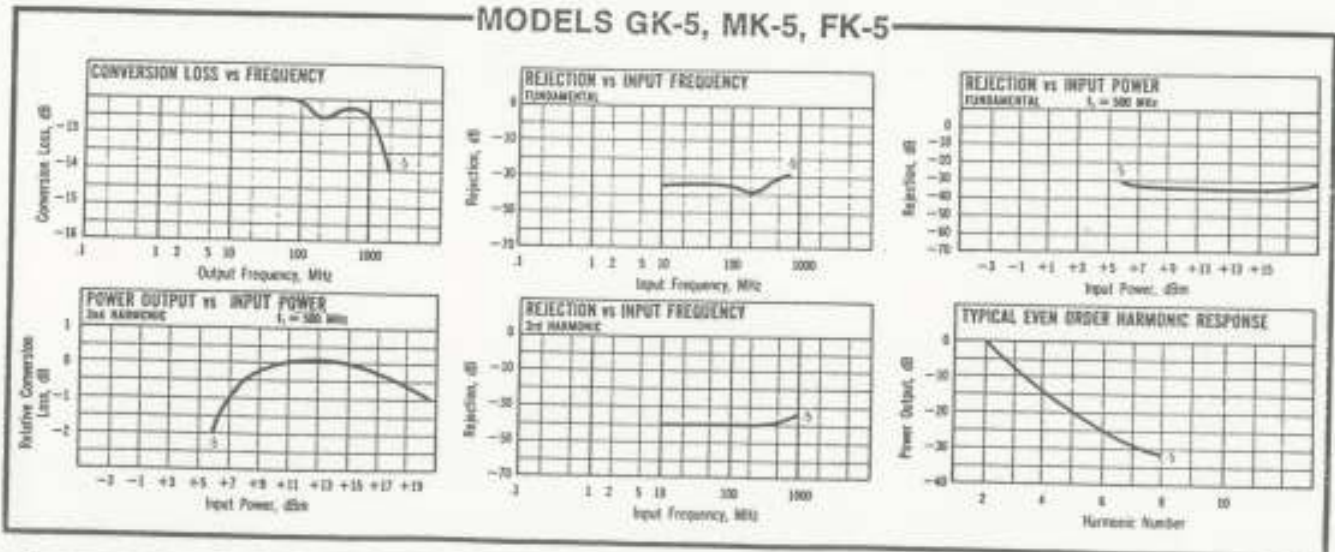
Model No.	Frequency Range, MHz		RF Input Power Full Range	Conversion Loss, dB			Spurious Harmonic Output, dB Relative to F2						
	Input	Output		Over Freq. Band MHz	Typ.	Max.	Over Freq. Band MHz	F1		F2		F4	
								Typ.	Max.	Typ.	Max.	Typ.	Max.
GK-2 MK-2	1-500	2-1000	+1 dBm to +15 dBm	1-100 100-300 300-500	13 13.5 14.0	15 15.5 16.5	2-200 200-600 600-1000	-40 -25 -20	-30 -20 -15	-50 -40 -30	-40 -30 -25	-16 -16 -16	-12 -12 -
GK-3 MK-3	.05-150	.1-300	+0 dBm to +13 dBm	.05-50 50-150	11 11.5	13 15	.1-100 100-300	-40 -35	-30 -20	-45 -40	-30 -20	-16 -16	-12 -12
GK-5 MK-5 FK-5	10-1000	20-2000	+10 dBm to +20 dBm*	10-600 600-1000	13 14	15 17	10-1000	-20 -15	-15	-25 -20	-20	-	-

* For GK-5/MK-5/FK-5 Full range is +13 dBm to +20 dBm above 700 MHz.

MODELS GK-2, GK-3, MK-2, MK-3



MODELS GK-5, MK-5, FK-5



PROMPT SERVICE / ONE WEEK DELIVERY  Mini-Circuits