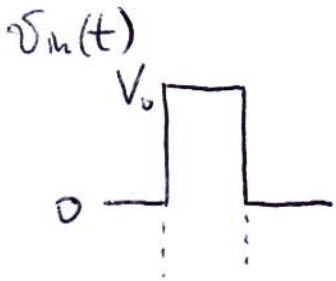
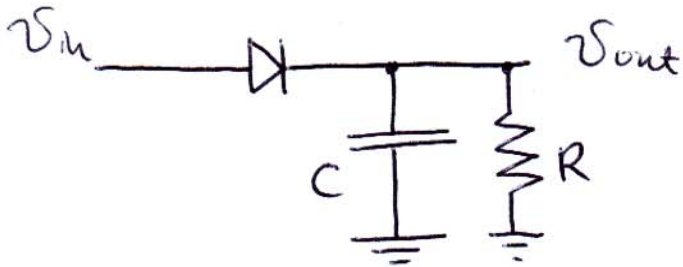


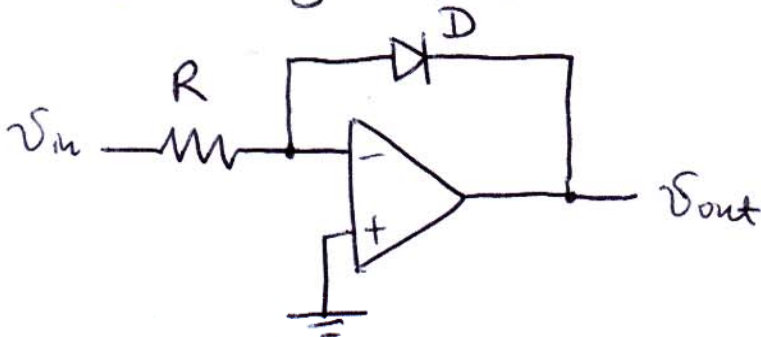
Lecture 15

Diode applications (contd.)

⑦ Pulse stretcher



⑧ Log amplifier



- use to

- use to

⑨ Anti-log amplifier

Diode :

Transistor :
_

Bipolar junction transistor

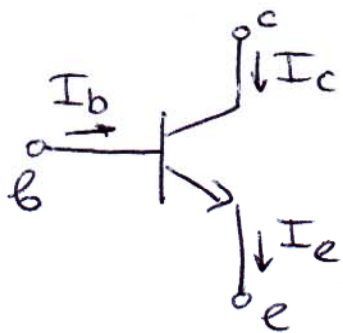
③

2 types

arrow on emitter :

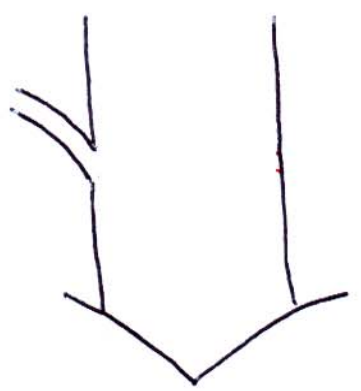
npn \leftrightarrow pnp

npn



KCL : $I_e = I_b + I_c$

Typical values:



I_c is controlled by I_b
 \Rightarrow transistor in normal operation

N.B. transistor

